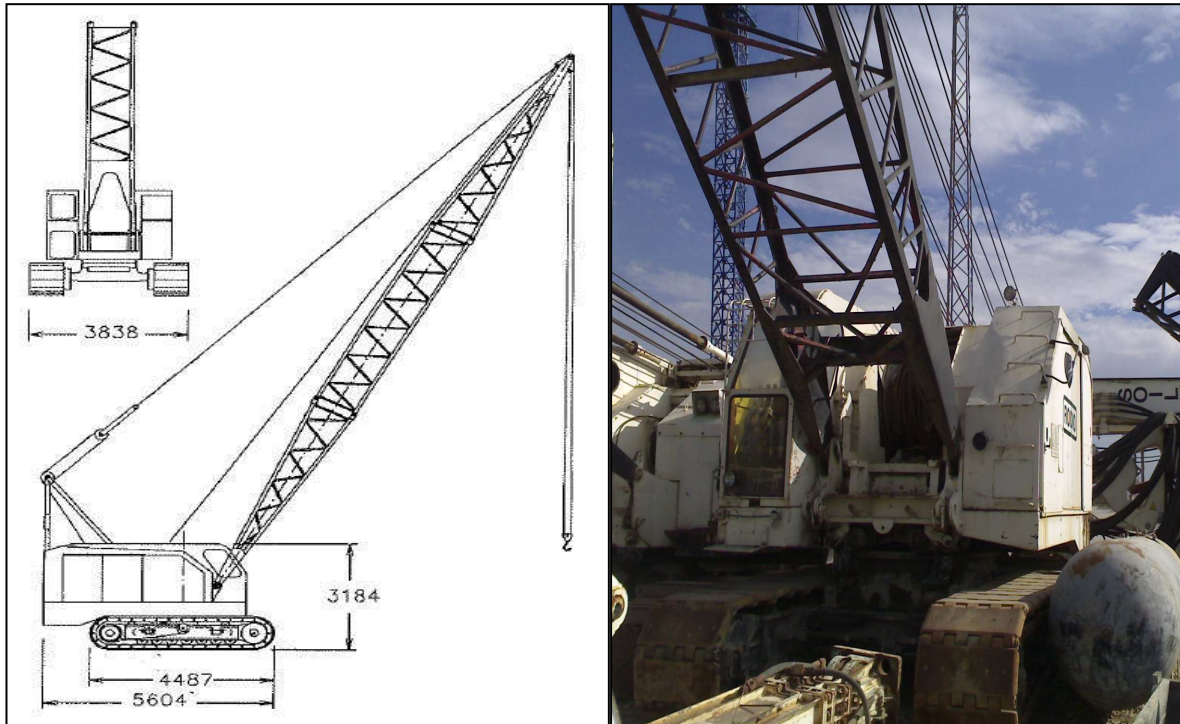


CRANE AMERICAN 7250-C



AMERICAN 7250-C	Code
Serial Nbr	GS-16178
Y.O.M.	1990
Hours number	12370
Max. lifting capacity	54.4 Ton
Engine	DETROIT 1063, 208cv@2100rpm
Main winch	10 Ton
Boom	1 boom foot
	1 boom head
	3 booms section 6 m
	1 boom section 3 m
Counterweight	15.4 Ton
Condition	To plan minor repair
Localisation	Madrid, Spain
Availability	Immediately

Price ex-work Madrid, Spain: **P.O.R.**